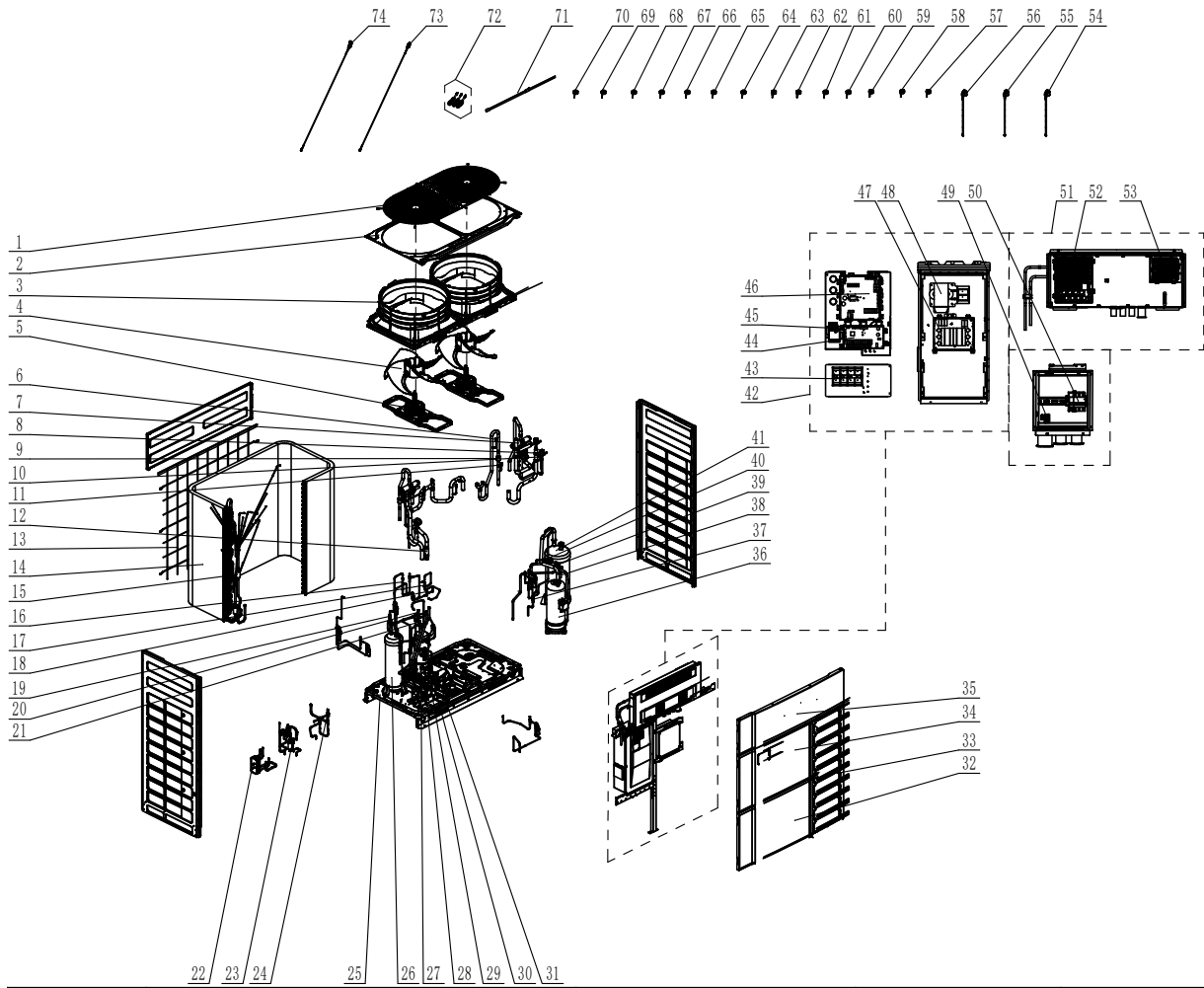


GMV-Q120WM/C-F(U)



| No | Name | Material code | Vulnerable part * | Qty |
|----|-------------------------|---------------|-------------------|-----|
| 1 | Rear Grill | 016001060013 | * | 1 |
| 2 | Coping | 012049000059P | | 1 |
| 3 | Diversion Circle | 200150000011 | * | 2 |
| 4 | Axial Flow Fan | 103002060011 | * | 2 |
| 5 | Brushless DC Motor | 1570411901 | * | 2 |
| 6 | Nozzle for Adding Freon | 06120012 | * | 2 |
| 7 | 4-Way Valve | 43000339 | * | 2 |
| 8 | Electromagnetic Valve | 43000073 | * | 2 |
| 9 | One Way Valve | 071001060007 | * | 2 |
| 10 | Electromagnetic Valve | 43000072 | * | 4 |
| 11 | Nozzle for Adding Freon | 061200101 | * | 1 |
| 12 | Strainer | 07414100024 | * | 1 |
| 13 | Rear Grill | 016001060012 | * | 1 |
| 14 | Condenser Assy | 011002060784 | * | 1 |
| 15 | Gas Tube Filter | 072190511 | * | 3 |
| 16 | One Way Valve | 07130101 | * | 2 |
| 17 | Discharge Charge Valve | 07133771 | * | 1 |
| 18 | Electromagnetic Valve | 43000055 | * | 1 |
| 19 | Strainer | 07415200002 | * | 4 |
| 20 | Unloading Valve | 07334100002 | * | 3 |

| No | Name | Material code | Vulnerable part * | Qty |
|----|-------------------------------------|----------------|-------------------|-----|
| 21 | Electromagnetic Valve | 43044100144 | * | 4 |
| 22 | Plate-Type Heat Exchanger | 010007060007 | * | 1 |
| 23 | Electronic Expansion Valve | 072009060040 | * | 1 |
| 24 | Electromagnetic Valve | 43044100224 | * | 1 |
| 25 | Base Plate Sub-Assy | 017000061060P | | 1 |
| 26 | Accumulator | 035029060022 | * | 1 |
| 27 | Electronic Expansion Valve | 072009060012 | * | 2 |
| 28 | Cut off Valve | 0733410005301 | * | 1 |
| 29 | Cut off Valve | 0733410001401 | * | 2 |
| 30 | Oil Separator | 035028060002 | * | 1 |
| 31 | Nozzle for Adding Freon | 06130002 | * | 1 |
| 32 | Left Front Panel | 012062000016P | | 1 |
| 33 | Right Panel | 012167000014P | | 1 |
| 34 | Front Panel Assy | 000003060148 | | 1 |
| 35 | Cover Plate | 012035000246P | | 1 |
| 36 | Compressor and Fittings | 009001060285 | * | 1 |
| 37 | Strainer | 07222025 | * | 1 |
| 38 | Silencer | 035023000007 | * | 1 |
| 39 | Pressure Protect Switch | 4602000911 | * | 1 |
| 40 | Pressure Protect Switch | 46020015154 | | 1 |
| 41 | Gas-Liquid Separator | 035027060035 | * | 1 |
| 42 | Electric Box Assy | 100002078490 | * | 1 |
| 43 | Terminal Board | 4201024701 | * | 1 |
| 44 | Main Board | 300027060098 | * | 1 |
| 45 | Terminal Board | 42200006005403 | * | 1 |
| 46 | Main Board | 300027062913 | * | 1 |
| 47 | Filter Board | 300020060125 | * | 1 |
| 48 | Reactor | 450004060033 | * | 1 |
| 49 | Terminal Board | 42011103 | * | 1 |
| 50 | Overcurrent Circuit Breaker | 43003106000903 | | 1 |
| 51 | Electric Box Assy | 100002079590 | | 1 |
| 52 | Drive Board | 300078060165 | * | 1 |
| 53 | Fan Board | 300094000052 | * | 2 |
| 54 | Electric Expand Valve Fitting | 4304413248 | * | 1 |
| 55 | Electric Expand Valve Fitting | 072002000011 | * | 1 |
| 56 | Electric Expand Valve Fitting | 07200200001102 | * | 1 |
| 57 | 4 Way Valve Coil | 07201006000601 | * | 1 |
| 58 | 4 Way Valve Coil | 07201006000603 | * | 1 |
| 59 | Magnet Coil (Electromagnetic Valve) | 07200106001524 | * | 1 |
| 60 | Magnet Coil (Electromagnetic Valve) | 07200106001525 | * | 1 |
| 61 | Magnet Coil (Electromagnetic Valve) | 07200106001526 | * | 1 |
| 62 | Magnet Coil (Electromagnetic Valve) | 07200106001530 | * | 1 |
| 63 | Magnet Coil (Electromagnetic Valve) | 07200106001502 | * | 1 |
| 64 | Magnet Coil (Electromagnetic Valve) | 07200106001521 | * | 1 |
| 65 | Magnet Coil (Electromagnetic Valve) | 07200106001522 | * | 1 |
| 66 | Magnet Coil (Electromagnetic Valve) | 07200106001523 | * | 1 |
| 67 | Magnet Coil (Electromagnetic Valve) | 07200106001527 | * | 1 |
| 68 | Magnet Coil (Electromagnetic Valve) | 07200106001529 | * | 1 |
| 69 | Magnet Coil (Electromagnetic Valve) | 07200106001531 | * | 1 |
| 70 | Magnet Coil (Electromagnetic Valve) | 07200106001528 | * | 1 |
| 71 | Electric Heater(Compressor) | 7651540714 | * | 1 |

| No | Name | Material code | Vulnerable part * | Qty |
|----|-----------------|---------------|-------------------|-----|
| 72 | Sensor Sub-assy | 390002060061 | * | 1 |
| 73 | Pressure Sensor | 430044060014 | * | 1 |
| 74 | Pressure Sensor | 430044060013 | * | 1 |