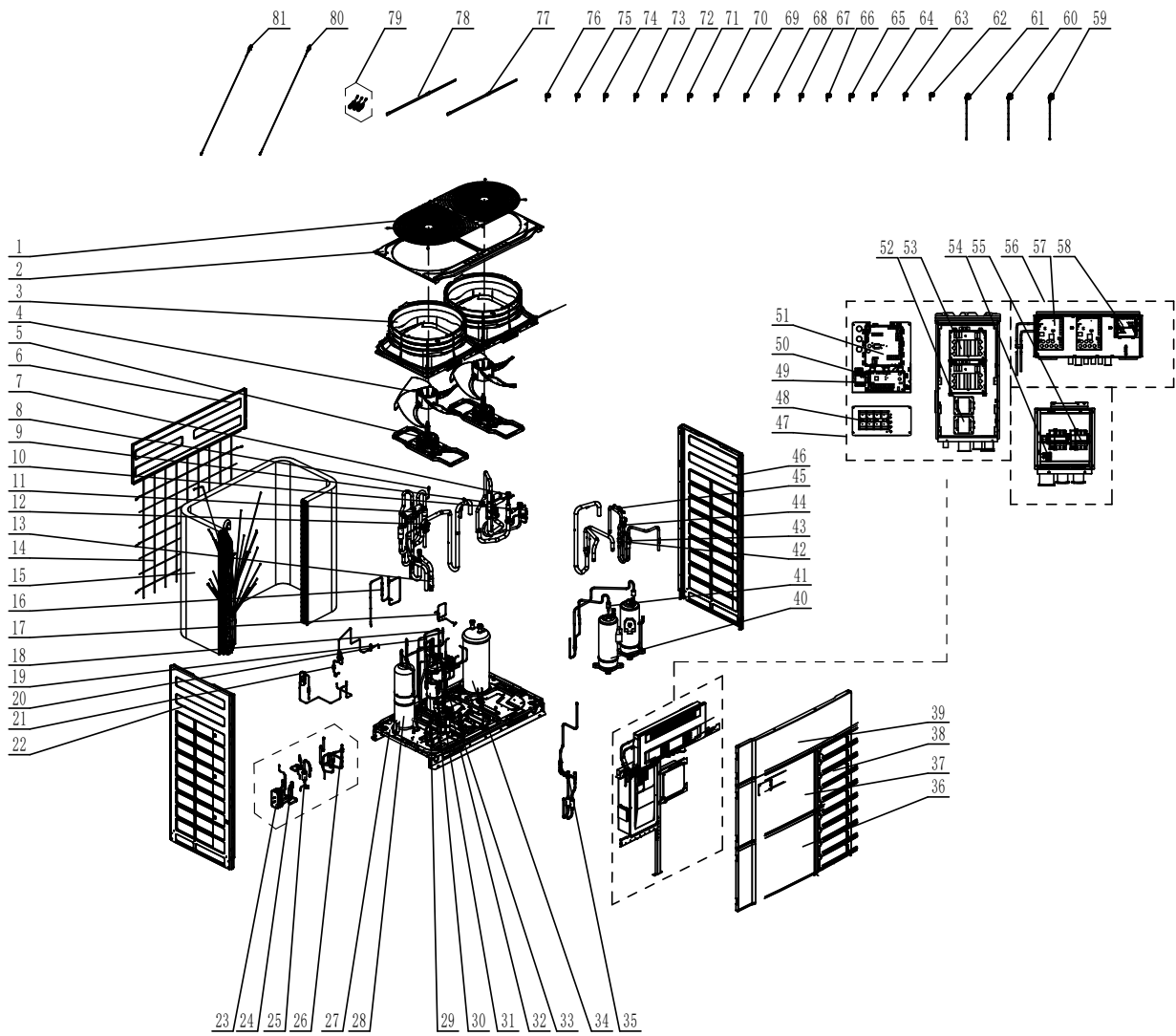


# GMV-Q144WM/C-F(U)



No.	Name	Material code	Vulnerable part *	Qty
1	Rear Grill	016001060013	*	1
2	Coping	012049000059P		1
3	Diversion Circle	200150000011	*	2
4	Axial Flow Fan	103002060011	*	2
5	Brushless DC Motor	1570411901	*	2
6	Cover Plate	012035000247P		1
7	Electromagnetic Valve	072008060007	*	2
8	Nozzle for Adding Freon	06120012	*	2
9	4-Way Valve	43000339	*	2
10	Electromagnetic Valve	43000072	*	4
11	One Way Valve	071001060008	*	2
12	Nozzle for Adding Freon	035114060003	*	1
13	Strainer	07414100024	*	1
14	Rear Grill	016001060012	*	1
15	Condenser Assy	011002061793	*	1
16	One Way Valve	07130101	*	2
17	Discharge Charge Valve	07133771	*	1
18	Electromagnetic Valve	43044100144	*	5
19	Unloading Valve	07334100002	*	3
20	Electromagnetic Valve	43000055	*	1

No.	Name	Material code	Vulnerable part *	Qty
21	Strainer	07415200002	*	4
22	Left Side Plate Sub-Assy	017037060016P		1
23	Plate-Type Heat Exchanger	010007060006	*	1
24	Electronic Expansion Valve	072009060008	*	1
25	Gas Tube Filter	072190511	*	3
26	Electromagnetic Valve	43044100224	*	1
27	Chassis Sub-Assy	017000060477P		1
28	Accumulator	035029060022	*	1
29	Oil Separator	035028060002	*	1
30	Cut off Valve	0733410005301	*	1
31	Cut off Valve	0733410001401	*	2
32	Nozzle for Adding Freon	06130002	*	1
33	Strainer	07222025	*	1
34	Gas-Liquid Separator	035027060004	*	1
35	Electronic Expansion Valve	072009060012	*	2
36	Left Front Panel	012062000016P		1
37	Left Front Panel	012062000017P		1
38	Right Panel	012167000014P		1
39	Cover Plate	012035000246P		1
40	Compressor and Fittings	009001060230	*	2
41	Silencer	035023000007	*	2
42	One Way Valve	071001060010	*	2
43	Pressure Protect Switch	4602000911	*	1
44	Pressure Protect Switch	4602000910	*	1
45	Pressure Protect Switch	46020015154		1
46	Right Side Plate Sub-Assy	017038060026P		1
47	Electric Box Assy	100002077361	*	1
48	Terminal Board	4201024701	*	1
49	Main Board	300027060098	*	1
50	Terminal Board	42200006005403	*	1
51	Main Board	300027062913	*	1
52	Reactor	450004060018	*	2
53	Filter Board	300020060125	*	2
54	Terminal Board	42011103	*	1
55	Overcurrent Circuit Breaker	43003106000903		2
56	Electric Box Assy	100002079589	*	1
57	Drive Board	300078060153	*	2
58	Fan Board	300094000052	*	2
59	Electric Expand Valve Fitting	07200200001102	*	1
60	Electric Expand Valve Fitting	072002000011	*	1
61	Electric Expand Valve Fitting	4304413248	*	1
62	Magnet Coil (Electromagnetic Valve)	07200106001523	*	1
63	Magnet Coil (Electromagnetic Valve)	07200106001527	*	1
64	Magnet Coil (Electromagnetic Valve)	07200106001529	*	1
65	Magnet Coil (Electromagnetic Valve)	07200106001528	*	1
66	Magnet Coil (Electromagnetic Valve)	07200106001531	*	1
67	4 Way Valve Coil	07201006000602	*	1
68	4 Way Valve Coil	07201006000603	*	1
69	Magnet Coil (Electromagnetic Valve)	07200106001524	*	1
70	Magnet Coil (Electromagnetic Valve)	07200106001525	*	1
71	Magnet Coil (Electromagnetic Valve)	07200106001526	*	1
72	Magnet Coil (Electromagnetic Valve)	07200106001530	*	1
73	Magnet Coil (Electromagnetic Valve)	07200106001502	*	1

No.	Name	Material code	Vulnerable part *	Qty
74	Magnet Coil (Electromagnetic Valve)	07200106001520	*	1
75	Magnet Coil (Electromagnetic Valve)	07200106001521	*	1
76	Magnet Coil (Electromagnetic Valve)	07200106001522	*	1
77	Electrical Heater(Compressor)	7651521243	*	1
78	Electrical Heater	7651521244	*	1
79	Sensor Sub-Assy	390002060060	*	1
80	Pressure Sensor	430044060014	*	1
81	Pressure Sensor	430044060013	*	1