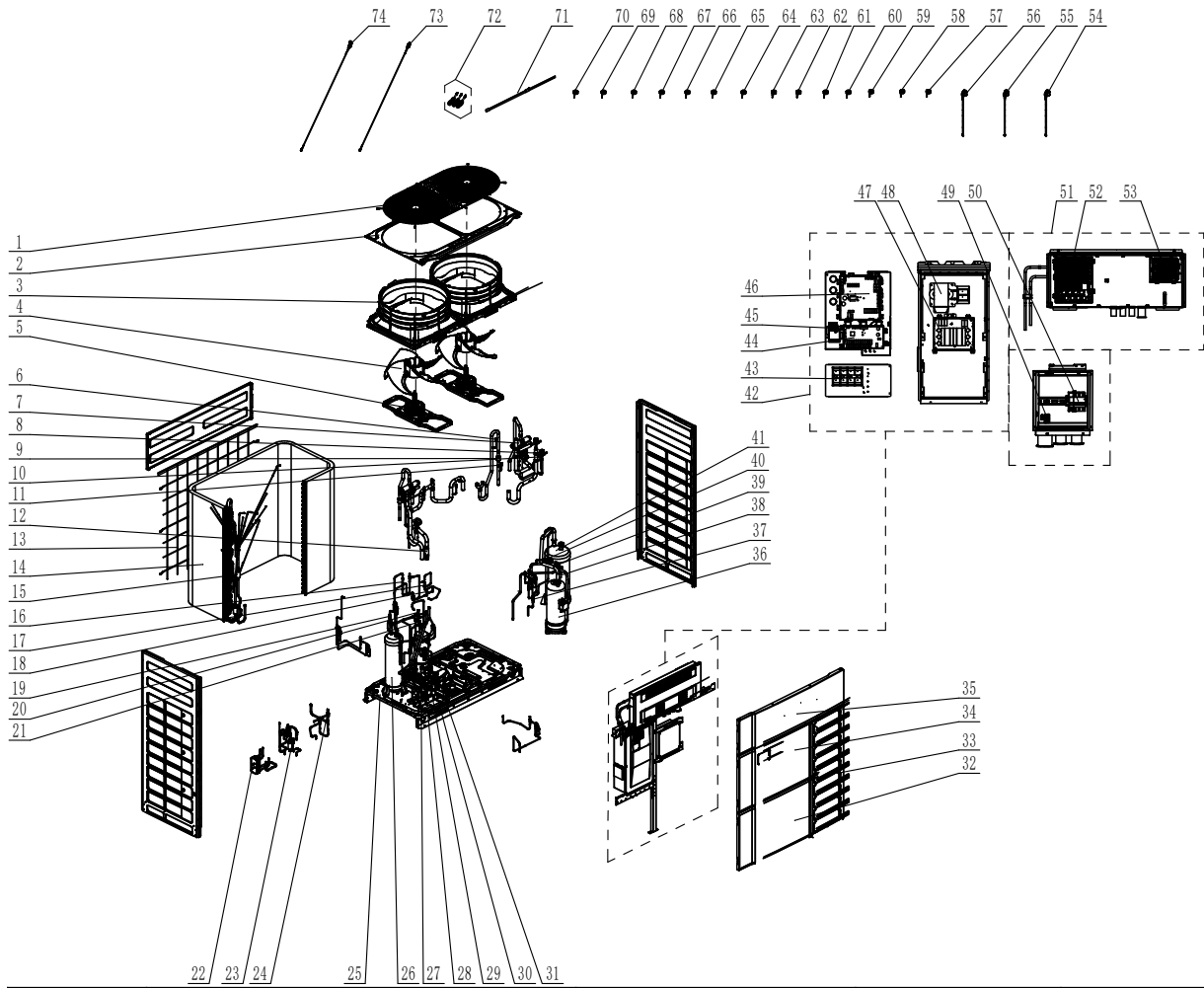


GMV-Q96WM/C-F(U)



No	Name	Material code	Vulnerable part *	Qty
1	Rear Grill	016001060013	*	1
2	Coping	012049000059P		1
3	Diversion Circle	200150000011	*	2
4	Axial Flow Fan	103002060011	*	2
5	Brushless DC Motor	1570411901	*	2
6	Nozzle for Adding Freon	06120012	*	2
7	4-Way Valve	43000339	*	2
8	Electromagnetic Valve	43000073	*	2
9	One Way Valve	071001060007	*	2
10	Electromagnetic Valve	43000072	*	4
11	Nozzle for Adding Freon	061200101	*	1
12	Strainer	07414100024	*	1
13	Rear Grill	016001060012	*	1
14	Condenser Assy	011002060784	*	1
15	Gas Tube Filter	072190511	*	3
16	One Way Valve	07130101	*	2
17	Discharge Charge Valve	07133771	*	1
18	Electromagnetic Valve	43000055	*	1
19	Strainer	07415200002	*	4
20	Unloading Valve	07334100002	*	3

No	Name	Material code	Vulnerable part *	Qty
21	Electromagnetic Valve	43044100144	*	4
22	Plate-Type Heat Exchanger	010007060007	*	1
23	Electronic Expansion Valve	072009060040	*	1
24	Electromagnetic Valve	43044100224	*	1
25	Base Plate Sub-Assy	017000061060P		1
26	Accumulator	035029060022	*	1
27	Electronic Expansion Valve	072009060012	*	2
28	Cut off Valve	0733410005301	*	1
29	Cut off Valve	0733410001401	*	2
30	Oil Separator	035028060002	*	1
31	Nozzle for Adding Freon	06130002	*	1
32	Left Front Panel	012062000016P		1
33	Right Panel	012167000014P		1
34	Front Panel Assy	000003060148		1
35	Cover Plate	012035000246P		1
36	Compressor and Fittings	009001060285	*	1
37	Strainer	07222025	*	1
38	Silencer	035023000007	*	1
39	Pressure Protect Switch	4602000911	*	1
40	Pressure Protect Switch	46020015154		1
41	Gas-Liquid Separator	035027060035	*	1
42	Electric Box Assy	100002078490	*	1
43	Terminal Board	4201024701	*	1
44	Main Board	300027060098	*	1
45	Terminal Board	42200006005403	*	1
46	Main Board	300027062913	*	1
47	Filter Board	300020060125	*	1
48	Reactor	450004060033	*	1
49	Terminal Board	42011103	*	1
50	Overcurrent Circuit Breaker	43003106000903		1
51	Electric Box Assy	100002079590		1
52	Drive Board	300078060165	*	1
53	Fan Board	300094000052	*	2
54	Electric Expand Valve Fitting	4304413248	*	1
55	Electric Expand Valve Fitting	072002000011	*	1
56	Electric Expand Valve Fitting	07200200001102	*	1
57	4 Way Valve Coil	07201006000601	*	1
58	4 Way Valve Coil	07201006000603	*	1
59	Magnet Coil (Electromagnetic Valve)	07200106001524	*	1
60	Magnet Coil (Electromagnetic Valve)	07200106001525	*	1
61	Magnet Coil (Electromagnetic Valve)	07200106001526	*	1
62	Magnet Coil (Electromagnetic Valve)	07200106001530	*	1
63	Magnet Coil (Electromagnetic Valve)	07200106001502	*	1
64	Magnet Coil (Electromagnetic Valve)	07200106001521	*	1
65	Magnet Coil (Electromagnetic Valve)	07200106001522	*	1
66	Magnet Coil (Electromagnetic Valve)	07200106001523	*	1
67	Magnet Coil (Electromagnetic Valve)	07200106001527	*	1
68	Magnet Coil (Electromagnetic Valve)	07200106001529	*	1
69	Magnet Coil (Electromagnetic Valve)	07200106001531	*	1
70	Magnet Coil (Electromagnetic Valve)	07200106001528	*	1
71	Electric Heater(Compressor)	7651540714	*	1

No	Name	Material code	Vulnerable part *	Qty
72	Sensor Sub-assy	390002060061	*	1
73	Pressure Sensor	430044060014	*	1
74	Pressure Sensor	430044060013	*	1