

# EXPLODED VIEW & PARTS LIST



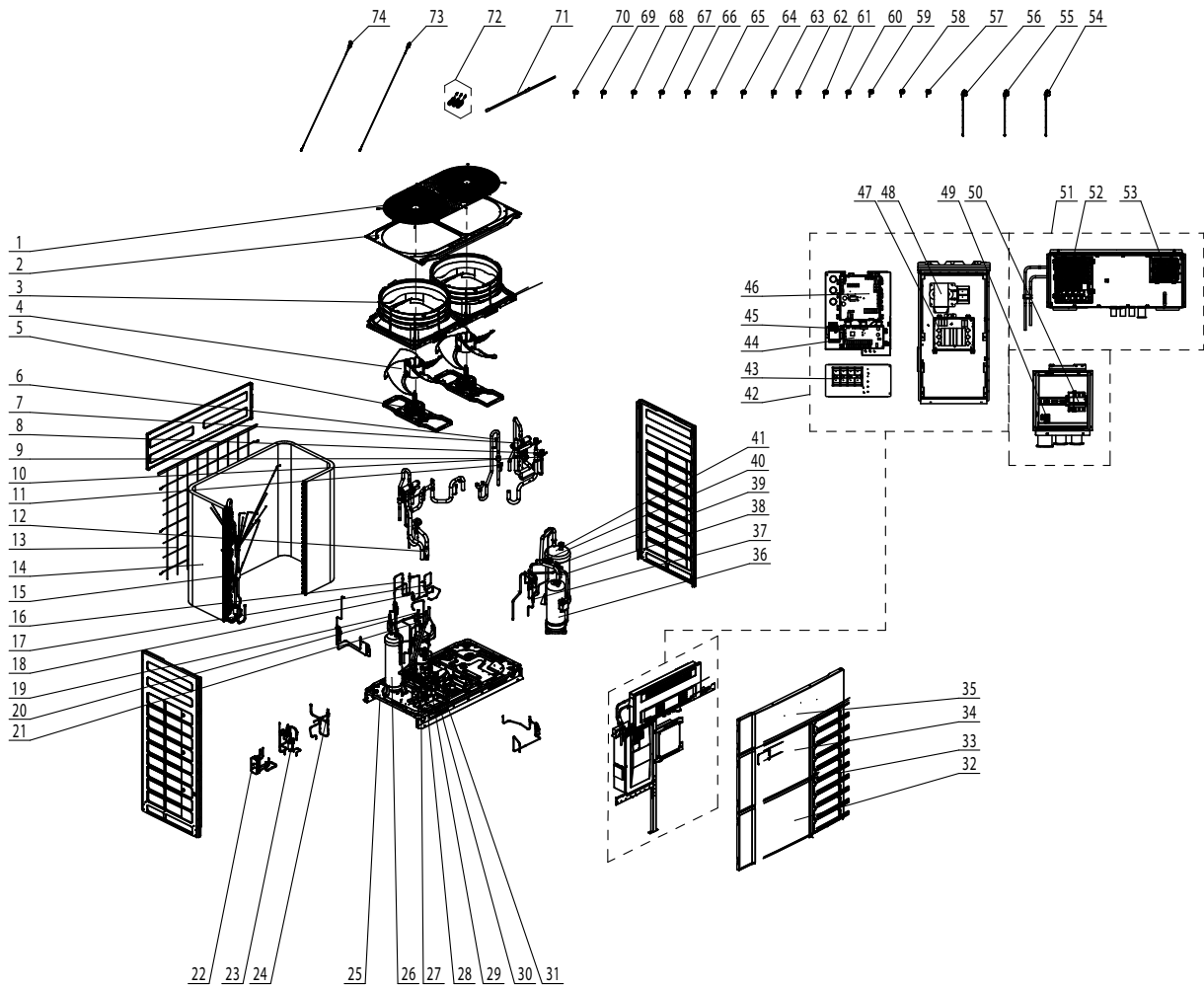
## Outdoor unit

GMV-VQ72WM/C-F(U)

GMV-VQ96WM/C-F(U)

GMV-VQ120WM/C-F(U)

# GMV-VQ72WM/C-F(U)



No	Name	Material code	Qty
1	Rear Grill	016001060013	1
2	Coping	012049000059P	1
3	Diversion Circle	200150000011	2
4	Axial Flow Fan	103002060011	2
5	Brushless DC Motor	1570411901	2
6	Nozzle for Adding Freon	06120012	2
7	4-Way Valve	43000339	2
8	Electromagnetic Valve	43000073	2
9	One Way Valve	071001060007	2
10	Electromagnetic Valve	43000072	4
11	Nozzle for Adding Freon	061200101	1
12	Strainer	07414100024	1
13	Rear Grill	016001060012	1
14	Condenser Assy	011002060784	1
15	Gas Tube Filter	072190511	3
16	One Way Valve	07130101	2
17	Discharge Charge Valve	07133771	1
18	Electromagnetic Valve	43000055	1
19	Strainer	07415200002	4
20	Unloading Valve	07334100002	3



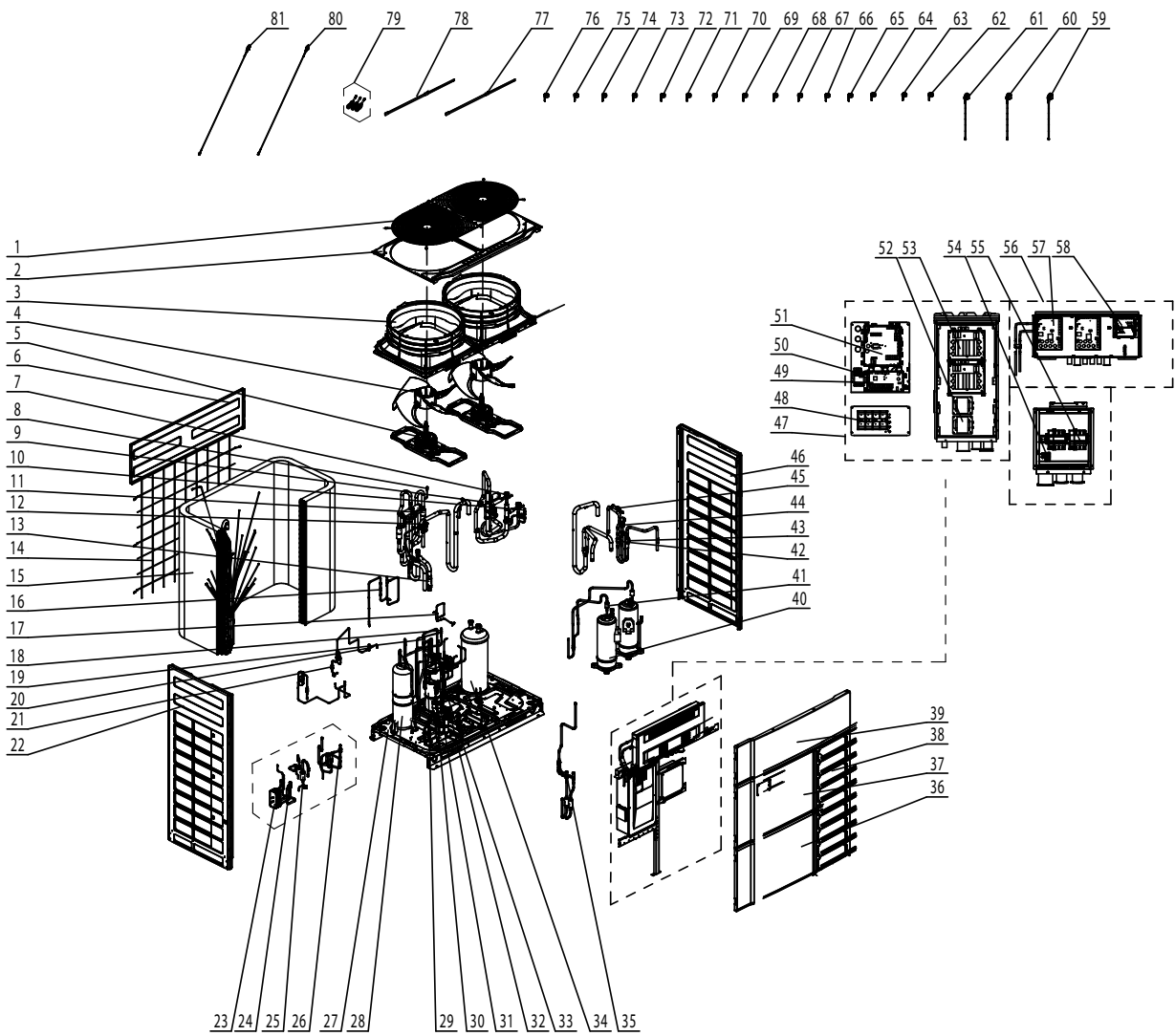
No	Name	Material code	Qty
21	Electromagnetic Valve	43044100144	4
22	Plate-Type Heat Exchanger	010007060007	1
23	Electronic Expansion Valve	072009060040	1
24	Electromagnetic Valve	43044100224	1
25	Base Plate Sub-Assy	017000061060P	1
26	Accumulator	035029060022	1
27	Electronic Expansion Valve	072009060012	2
28	Cut off Valve	0733410005301	1
29	Cut off Valve	0733410001401	2
30	Oil Separator	035028060002	1
31	Nozzle for Adding Freon	06130002	1
32	Left Front Panel	012062000016P	1
33	Right Panel	012167000014P	1
34	Front Panel Assy	000003060148	1
35	Cover Plate	012035000246P	1
36	Compressor and Fittings	009001060285	1
37	Strainer	07222025	1
38	Silencer	035023000007	1
39	Pressure Protect Switch	4602000911	1
40	Pressure Protect Switch	46020015154	1
41	Gas-Liquid Separator	035027060035	1
42	Electric Box Assy	100002078490	1
43	Terminal Board	4201024701	1
44	Main Board	300027060098	1
45	Terminal Board	42200006005403	1
46	Main Board	300027062913	1
47	Filter Board	300020060125	1
48	Reactor	450004060033	1
49	Terminal Board	42011103	1
50	Overcurrent Circuit Breaker	43003106000903	1
51	Electric Box Assy	100002079590	1
52	Drive Board	300078060165	1
53	Fan Board	300094000052	2
54	Electric Expand Valve Fitting	4304413248	1
55	Electric Expand Valve Fitting	072002000011	1
56	Electric Expand Valve Fitting	07200200001102	1
57	4 Way Valve Coil	07201006000601	1
58	4 Way Valve Coil	07201006000603	1
59	Magnet Coil (Electromagnetic Valve)	07200106001524	1
60	Magnet Coil (Electromagnetic Valve)	07200106001525	1
61	Magnet Coil (Electromagnetic Valve)	07200106001526	1
62	Magnet Coil (Electromagnetic Valve)	07200106001530	1
63	Magnet Coil (Electromagnetic Valve)	07200106001502	1
64	Magnet Coil (Electromagnetic Valve)	07200106001521	1
65	Magnet Coil (Electromagnetic Valve)	07200106001522	1
66	Magnet Coil (Electromagnetic Valve)	07200106001523	1
67	Magnet Coil (Electromagnetic Valve)	07200106001527	1
68	Magnet Coil (Electromagnetic Valve)	07200106001529	1
69	Magnet Coil (Electromagnetic Valve)	07200106001531	1
70	Magnet Coil (Electromagnetic Valve)	07200106001528	1
71	Electric Heater(Compressor)	7651540714	1



No	Name	Material code	Qty
72	Sensor Sub-assy	390002060061	1
73	Pressure Sensor	430044060014	1
74	Pressure Sensor	430044060013	1



# GMV-VQ96WM/C-F(U)



No.	Name	Material code	Qty
1	Rear Grill	016001060013	1
2	Coping	012049000059P	1
3	Diversion Circle	200150000011	2
4	Axial Flow Fan	103002060011	2
5	Brushless DC Motor	1570411901	2
6	Cover Plate	012035000247P	1
7	Electromagnetic Valve	072008060007	2
8	Nozzle for Adding Freon	06120012	2
9	4-Way Valve	43000339	2
10	Electromagnetic Valve	43000072	4
11	One Way Valve	071001060008	2
12	Nozzle for Adding Freon	035114060003	1
13	Strainer	07414100024	1
14	Rear Grill	016001060012	1
15	Condenser Assy	011002061793	1
16	One Way Valve	07130101	2
17	Discharge Charge Valve	07133771	1
18	Electromagnetic Valve	43044100144	5
19	Unloading Valve	07334100002	3
20	Electromagnetic Valve	43000055	1



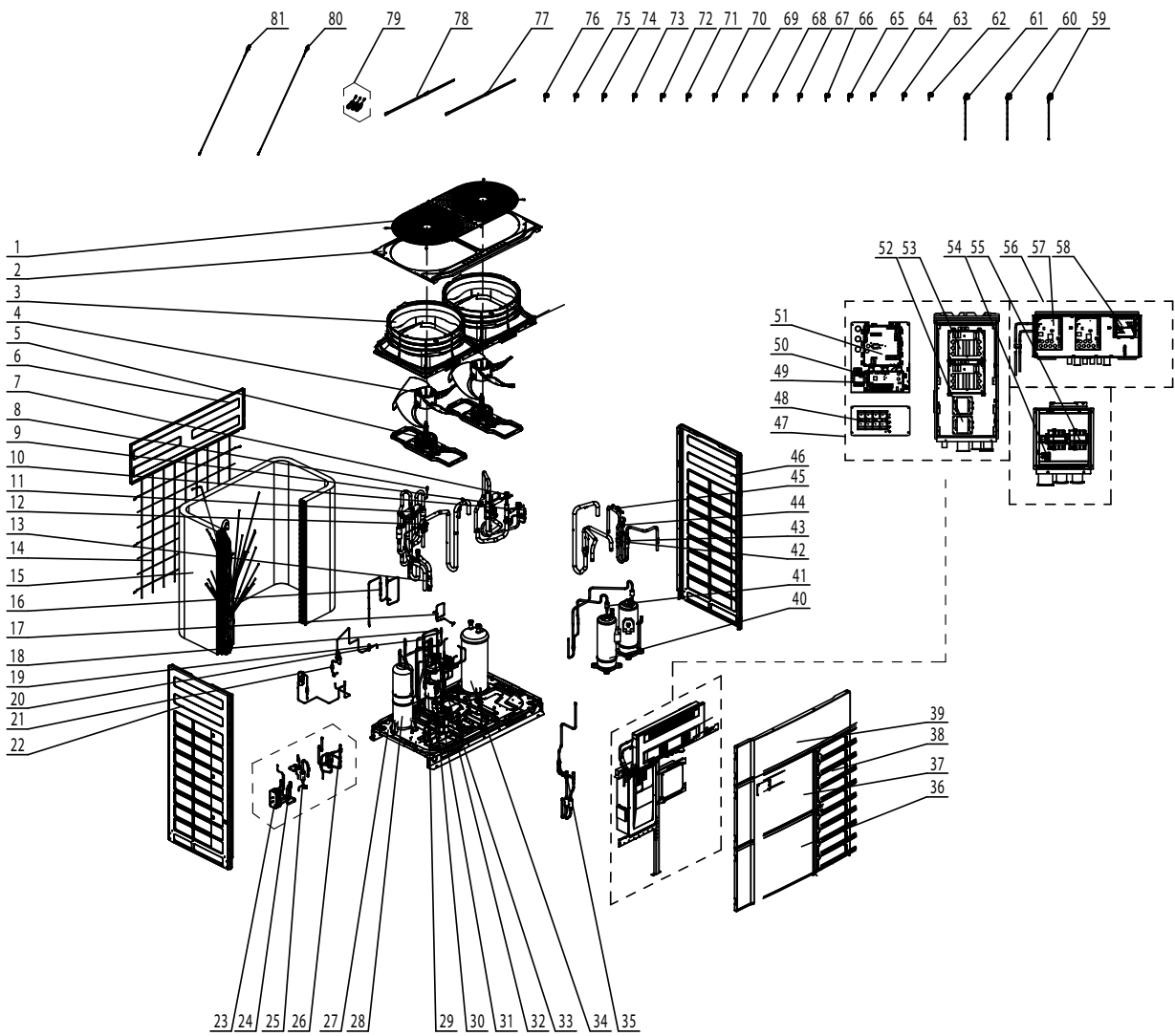
No.	Name	Material code	Qty
21	Strainer	07415200002	4
22	Left Side Plate Sub-Assy	017037060016P	1
23	Plate-Type Heat Exchanger	010007060006	1
24	Electronic Expansion Valve	072009060008	1
25	Gas Tube Filter	072190511	3
26	Electromagnetic Valve	43044100224	1
27	Chassis Sub-Assy	017000060477P	1
28	Accumulator	035029060022	1
29	Oil Separator	035028060002	1
30	Cut off Valve	0733410005301	1
31	Cut off Valve	0733410001401	2
32	Nozzle for Adding Freon	06130002	1
33	Strainer	07222025	1
34	Gas-Liquid Separator	035027060004	1
35	Electronic Expansion Valve	072009060012	2
36	Left Front Panel	012062000016P	1
37	Left Front Panel	012062000017P	1
38	Right Panel	012167000014P	1
39	Cover Plate	012035000246P	1
40	Compressor and Fittings	009001060230	2
41	Silencer	035023000007	2
42	One Way Valve	071001060010	2
43	Pressure Protect Switch	4602000911	1
44	Pressure Protect Switch	4602000910	1
45	Pressure Protect Switch	46020015154	1
46	Right Side Plate Sub-Assy	017038060026P	1
47	Electric Box Assy	100002077361	1
48	Terminal Board	4201024701	1
49	Main Board	300027060098	1
50	Terminal Board	42200006005403	1
51	Main Board	300027062913	1
52	Reactor	450004060018	2
53	Filter Board	300020060125	2
54	Terminal Board	42011103	1
55	Overcurrent Circuit Breaker	43003106000903	2
56	Electric Box Assy	100002079589	1
57	Drive Board	300078060153	2
58	Fan Board	300094000052	2
59	Electric Expand Valve Fitting	07200200001102	1
60	Electric Expand Valve Fitting	072002000011	1
61	Electric Expand Valve Fitting	4304413248	1
62	Magnet Coil (Electromagnetic Valve)	07200106001523	1
63	Magnet Coil (Electromagnetic Valve)	07200106001527	1
64	Magnet Coil (Electromagnetic Valve)	07200106001529	1
65	Magnet Coil (Electromagnetic Valve)	07200106001528	1
66	Magnet Coil (Electromagnetic Valve)	07200106001531	1
67	4 Way Valve Coil	07201006000602	1
68	4 Way Valve Coil	07201006000603	1
69	Magnet Coil (Electromagnetic Valve)	07200106001524	1
70	Magnet Coil (Electromagnetic Valve)	07200106001525	1
71	Magnet Coil (Electromagnetic Valve)	07200106001526	1
72	Magnet Coil (Electromagnetic Valve)	07200106001530	1
73	Magnet Coil (Electromagnetic Valve)	07200106001502	1



No.	Name	Material code	Qty
74	Magnet Coil (Electromagnetic Valve)	07200106001520	1
75	Magnet Coil (Electromagnetic Valve)	07200106001521	1
76	Magnet Coil (Electromagnetic Valve)	07200106001522	1
77	Electrical Heater(Compressor)	7651521243	1
78	Electrical Heater	7651521244	1
79	Sensor Sub-Assy	390002060060	1
80	Pressure Sensor	430044060014	1
81	Pressure Sensor	430044060013	1



# GMV-VQ120WM/C-F(U)



No.	Name	Material code	Qty
1	Rear Grill	016001060013	1
2	Coping	012049000059P	1
3	Diversion Circle	200150000011	2
4	Axial Flow Fan	103002060011	2
5	Brushless DC Motor	1570411901	2
6	Cover Plate	012035000247P	1
7	Electromagnetic Valve	072008060007	2
8	Nozzle for Adding Freon	06120012	2
9	4-Way Valve	43000339	2
10	Electromagnetic Valve	43000072	4
11	One Way Valve	071001060008	2
12	Nozzle for Adding Freon	035114060003	1
13	Strainer	07414100024	1
14	Rear Grill	016001060012	1
15	Condenser Assy	011002061793	1
16	One Way Valve	07130101	2
17	Discharge Charge Valve	07133771	1
18	Electromagnetic Valve	43044100144	5
19	Unloading Valve	07334100002	3
20	Electromagnetic Valve	43000055	1





No.	Name	Material code	Qty
21	Strainer	07415200002	4
22	Left Side Plate Sub-Assy	017037060016P	1
23	Plate-Type Heat Exchanger	010007060006	1
24	Electronic Expansion Valve	072009060008	1
25	Gas Tube Filter	072190511	3
26	Electromagnetic Valve	43044100224	1
27	Chassis Sub-Assy	017000060477P	1
28	Accumulator	035029060022	1
29	Oil Separator	035028060002	1
30	Cut off Valve	0733410005301	1
31	Cut off Valve	0733410001401	2
32	Nozzle for Adding Freon	06130002	1
33	Strainer	07222025	1
34	Gas-Liquid Separator	035027060004	1
35	Electronic Expansion Valve	072009060012	2
36	Left Front Panel	012062000016P	1
37	Left Front Panel	012062000017P	1
38	Right Panel	012167000014P	1
39	Cover Plate	012035000246P	1
40	Compressor and Fittings	009001060230	2
41	Silencer	035023000007	2
42	One Way Valve	071001060010	2
43	Pressure Protect Switch	4602000911	1
44	Pressure Protect Switch	4602000910	1
45	Pressure Protect Switch	46020015154	1
46	Right Side Plate Sub-Assy	017038060026P	1
47	Electric Box Assy	100002077361	1
48	Terminal Board	4201024701	1
49	Main Board	300027060098	1
50	Terminal Board	42200006005403	1
51	Main Board	300027062913	1
52	Reactor	450004060018	2
53	Filter Board	300020060125	2
54	Terminal Board	42011103	1
55	Overcurrent Circuit Breaker	43003106000903	2
56	Electric Box Assy	100002079589	1
57	Drive Board	300078060153	2
58	Fan Board	300094000052	2
59	Electric Expand Valve Fitting	07200200001102	1
60	Electric Expand Valve Fitting	072002000011	1
61	Electric Expand Valve Fitting	4304413248	1
62	Magnet Coil (Electromagnetic Valve)	07200106001523	1
63	Magnet Coil (Electromagnetic Valve)	07200106001527	1
64	Magnet Coil (Electromagnetic Valve)	07200106001529	1
65	Magnet Coil (Electromagnetic Valve)	07200106001528	1
66	Magnet Coil (Electromagnetic Valve)	07200106001531	1
67	4 Way Valve Coil	07201006000602	1
68	4 Way Valve Coil	07201006000603	1
69	Magnet Coil (Electromagnetic Valve)	07200106001524	1
70	Magnet Coil (Electromagnetic Valve)	07200106001525	1
71	Magnet Coil (Electromagnetic Valve)	07200106001526	1
72	Magnet Coil (Electromagnetic Valve)	07200106001530	1
73	Magnet Coil (Electromagnetic Valve)	07200106001502	1



No.	Name	Material code	Qty
74	Magnet Coil (Electromagnetic Valve)	07200106001520	1
75	Magnet Coil (Electromagnetic Valve)	07200106001521	1
76	Magnet Coil (Electromagnetic Valve)	07200106001522	1
77	Electrical Heater(Compressor)	7651521243	1
78	Electrical Heater	7651521244	1
79	Sensor Sub-Assy	390002060060	1
80	Pressure Sensor	430044060014	1
81	Pressure Sensor	430044060013	1

